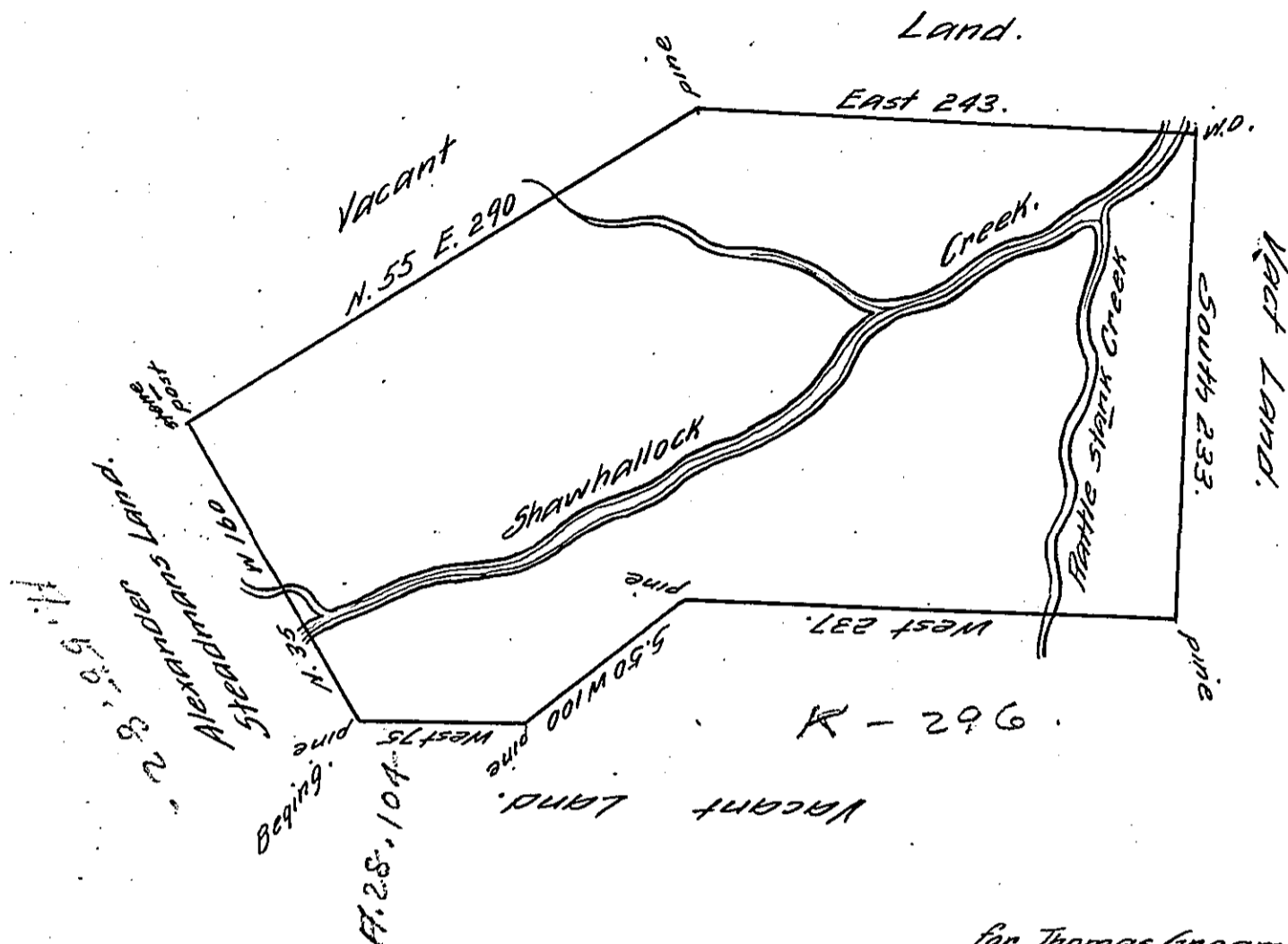


DINGMAN
&
B. Grove -
PIKE



for Thomas Greame

The above described Tract of Land was surveyed by Edward Scull Deceased in pursuance of a Warrant dated the 30th day of April 1754. situate on Shawhollock Creek over the Blue Mountains in the County of Northampton. Containing Five hundred & ninety six Acres & thirty seven perches with Allowance of six pct.

Nichs. Scull.

IN TESTIMONY that the above is a copy of the original remaining on file in the Department of Internal Affairs of Pennsylvania, made conformably to an Act of Assembly approved the 16th day of February, 1833, I have hereunto set my Hand and caused the Seal of said Department to be affixed at Harrisburg, this seventh day of June 1911

Henry Houck
Secretary of Internal Affairs.